

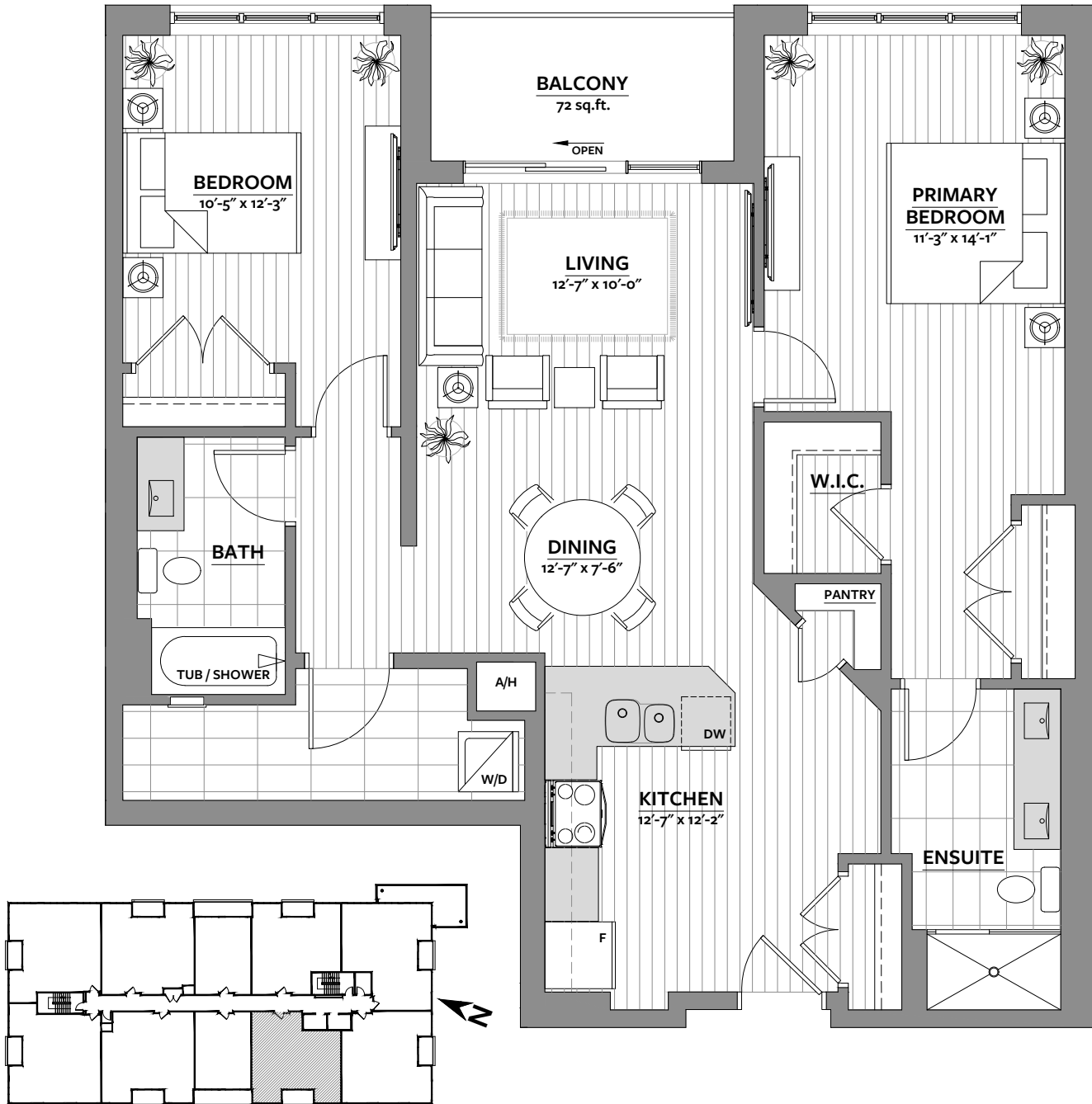
# TOPAZ

# MOONSTONE 2C

2 BED | 2 BATH | 1189 sq.ft.

UNIT: 104 - 604

(1<sup>ST</sup> FLOOR UNIT)  
(123 SQ.FT. TERRACE AT 1<sup>ST</sup> FLOOR)



FLOORS: 1<sup>ST</sup> - 6<sup>TH</sup>

[RentTopaz.ca](http://RentTopaz.ca)

1020 CORONATION DRIVE, LONDON, ONTARIO

Artistic Renderings are concept only and may show features not included. Layout and fixtures may be reversed or altered. Specifications, dimensions and layout subject to change without notice and may vary from marketing plans. E.&O.E.